

LED Spot Luminaires

Angulus series

ANGULUS series feature more concentrated light on the target surface. Specially designed for less glare with tilting angle. Maximum power is available with lumen packages from 2800 to 4200lm. Pinpoint illumination thanks to specially designed lens technology. Tilting angles from 0 to 37degree and rotation angles from 0 to 355degree are available to fulfill the requirement of different lighting applications.



AGR28-1604037L

Application

Retails, Hypermarket, Supermarket, Workshops, Office, Architecture, Stores

Key Facts & Features

- Power Delivery from 2800 to 4200 lm
- Beam Angles 13, 21, 30, 37degree
- CCT 3000 / 4000 / 5000K
- Recessed Installation
- Cutout Size : Ø148mm
- Flicker Free driver
- IP20 rating
- CRI : RA80



Ordering Information

Example: AGR28-1604037L

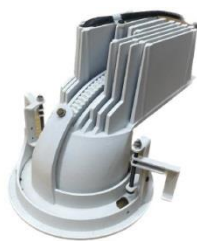
AG	R	28	160	40	37	L	
Model	Installation	Wattage	Diameter	CCT	Beam Angle	Lens	
AG Angulus	R Recessed	42 42Watt	160 Ø160mm	40 4000K	37 37 degree	L PMMA	
BE Bene	T Track	28 28Watt	110 Ø110mm	30 3000K	30 30 degree		
			80 Ø80mm	50 5000K	21 21 degree		
					13 13 degree		

Angulus series

Specifications

General

- Light-weighted design
- Easy maintenance with simple connection, tool-less
- Soft Light with less glare
- Easy angle adjustment
- IP20



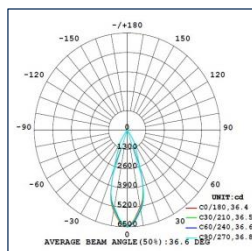
[Top]



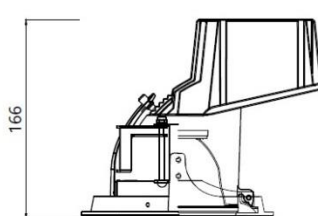
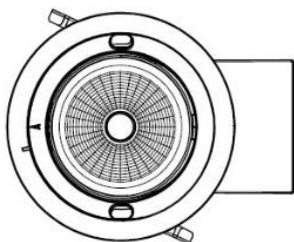
[Bottom]

Classification		Unit	SPECIFICATIONS	
General	Power Consumption	W	28	42
	Dimension	-	160(W) x 166(H)mm	
	Mounting	-	Recessed	
	Working Temp.	-	-4°F(-20°C) ~ +122°F(+50°C)	
	IP Rate	-	IP20	
Optical	Luminous Flux	lm	≤ 2,800	≤ 4,200
	Color Temp.	K	3000, 4000, 5000	
	CRI	Ra	≤ 80	
	Beam Angle		13, 21, 30, 37degree	
	Luminous Efficacy	lm/W	≤ 100	
Electrical	Voltage Range	Vac	220-240 / 1-Phase	
	Frequency Range	Hz	50 ~ 60	
	Power Factor	PF	90% over	
	Efficiency	%	90% over	
	THD	%	<20	

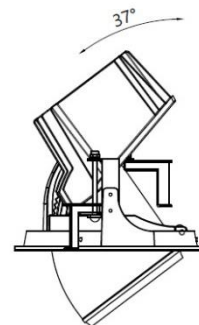
Beam Distribution & Dimension



[37]



[W80 x H233]



Applications

